

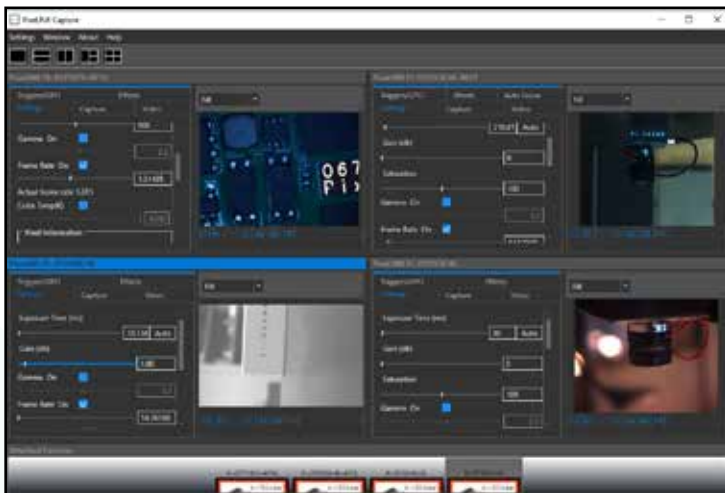
Pixelink Capture

for Windows

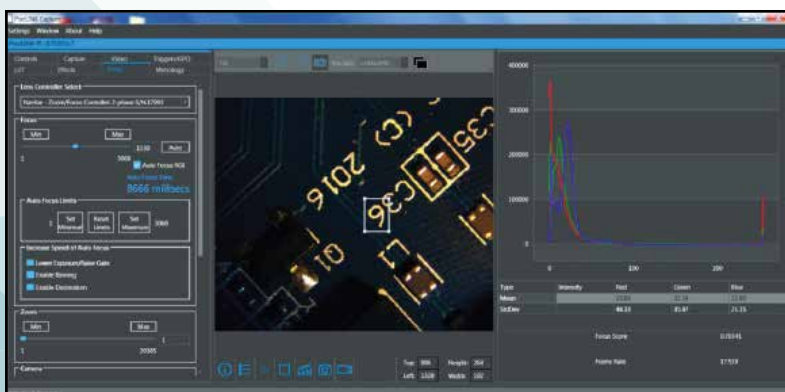
POWERFUL MULTI-CAMERA IMAGE CAPTURE SOFTWARE

Pixelink Capture is a real-time, interactive, multi-camera software application compatible with all Pixelink PL-D cameras. With a built-in autofocus feature, Pixelink Capture offers tremendous flexibility and power allowing the ability to configure and test multi-camera vision applications.

The multi-window environment includes a preview window, a configuration window, and a real-time graphical histogram. Users have the ability to adjust image size, color and exposure interactively through an easy-to-use control interface prior to image or video clip capture. The camera begins streaming at the point the application is launched.



Four Camera Layout



Integrated Lens Control of Focus and Zoom

Important Features

- Real-time video streaming
- Built-in autofocus application
- Resizable region of interest (ROI)
- Customizable multi-camera layout
- Image and video capture
- Trigger and GPO controls
- Supports Windows 7 and above

Enhanced Functionality

- Integrated lens control of zoom and focus for Navitar motorized lenses
- Accurate autofocus option for Navitar fine focus mechanisms
- Advanced metrology tools for on screen measurement of length, area and pixel location

Pixelink[®]
A NAVITAR COMPANY